

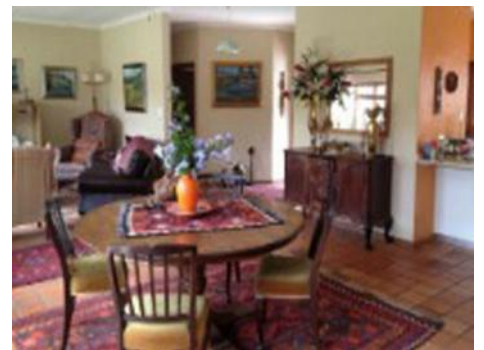
George

Objekt-Nr. 020149



Enjoy your new life in South Africa in this beautiful house

Konstruktionsfläche:	-	Energiezertifikat:	in Arbeit
Grundstück:	1.000 m <sup>2</sup>		
Schlafzimmer:	3		
Badezimmer:	2		
Meerblick:	-	<b>Preis:</b>	<b>\$ 163.896,-</b>



George

Objekt-Nr. 020149



## Objektbeschreibung:

This nice house is situated in the suburb of Heather Park, area of George, South Africa. The total surface of the property is about 1000 m<sup>2</sup> and the residence area is of approximately 223 m<sup>2</sup>.

The house offers 3 comfortable bedrooms and 2 bathrooms. There is also one dining area and nice lounge. Near the lounge is the private and beautiful garden.

For your security, there is a garage with automatic doors but also double carport. Special alarm system is installed inside and outside the house.

George

Objekt-Nr. 020149



## Lage & Umgebung:

George is situated about 430 km from Cape Town. With about 213,757 inhabitants, the town is one of the largest of Western Cape's.

Only a few kilometers from the Indian Ocean, George spreads out on a plateau on the southern edge of the Outeniqua Mountains.

George  
Objekt-Nr. 020149



General house view



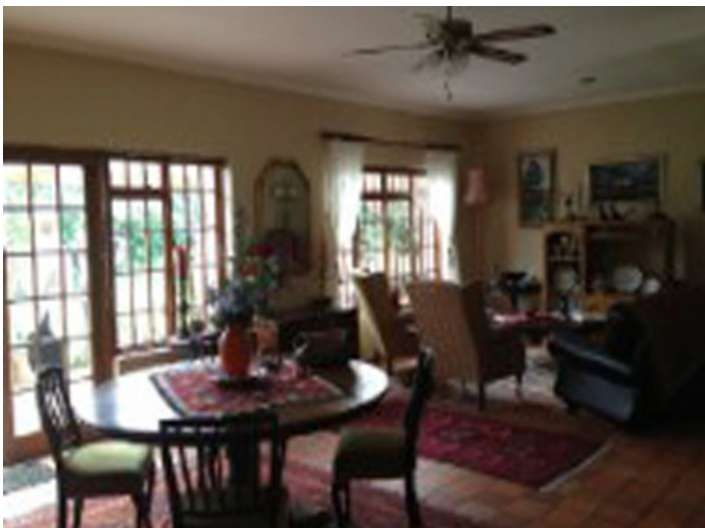
Carport available for 2 cars



Spacious dining room



Well equipped kitchen



Alle Angaben nach bestem Wissen. Irrtum und Zwischenverkauf vorbehalten. Dieses Exposé ist eine Vorinformation, als Rechtsgrundlage gilt allein der notariell abgeschlossene Kaufvertrag.

George

Objekt-Nr. 020149



Alle Angaben nach bestem Wissen. Irrtum und Zwischenverkauf vorbehalten. Dieses Exposé ist eine Vorinformation, als Rechtsgrundlage gilt allein der notariell abgeschlossene Kaufvertrag.

PORTA MONDIAL • C./ COLOM 20, 1º, E-07001 PALMA DE MALLORCA  
TEL. +34 971 720 164 • INFO@PORTAMONDIAL-SOUTHAFRICA.COM